

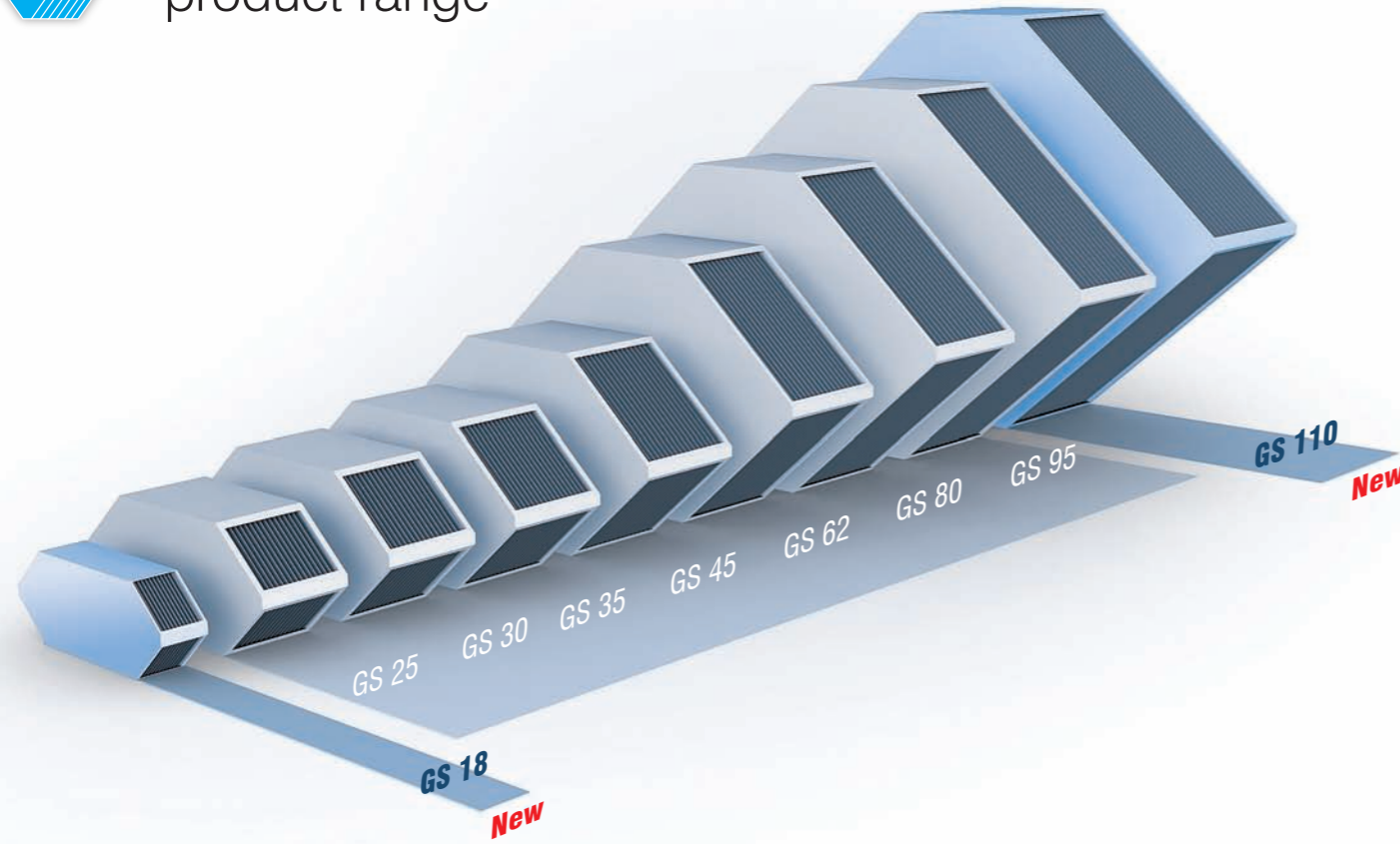
Product innovation

GS 18 and GS 110

KLINGENBURG



Counterflow heat exchanger product range

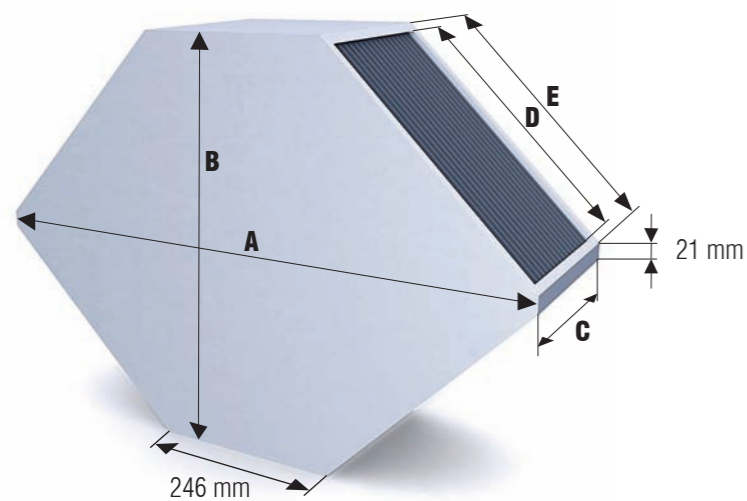


New Development Spring 2009

With already seven sizes, we offer the largest range of Counterflow Plate Heat Exchangers on the market.

With the advent of the **GS 18** up to 400 m³/h (with a unit width of 500 mm), and the **GS 110** (up to 2000 m³/h; with a unit width of 500 mm) these new sizes are now available (■).

Dimensions



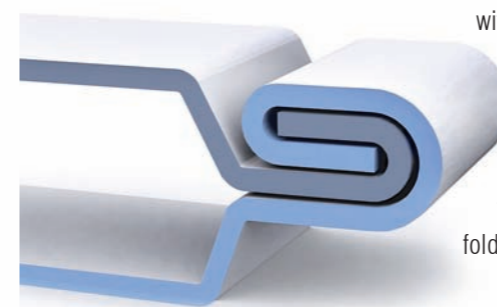
Dimensions					
Typ	A [mm]	B [mm]	C [mm]	D [mm]	E [mm]
GS 18	397	172	individual	93	108
GS 25	454	230	individual	134	148
GS 30	496	271	individual	163	177
GS 35	537	312	individual	193	206
GS 45	619	394	individual	249	264
GS 62	758	534	individual	347	362
GS 80	899	674	individual	447	462
GS 95	1040	815	individual	547	562
GS 110	1182	957	individual	647	662

Technical changes possible

Because of well known advantages, the Exchangers were made of seawater resistant aluminium right from the start.

Tightness, hygiene, form stability and life expectancy are the main principles behind the development of the Klingenberg Counterflow Heat Exchangers.

As the requirements and challenges of the Heat Exchanger increases with the air volume, the plates of the GS 80, the GS 95 and of the big brother GS 110 are equipped



with a double folded edge on the supply and return face side which results in five times the material thickness at the folded edge.

■ The double folding principle of the larger sizes, ensures stability and strength

This ensures strength, reliability and trust

Klingenberg Products set repeatedly new standards in the market. With our in-house machine technology and development department you can be assured that we work for your flexibility, today and tomorrow. Profit from new technology which becomes an essential part of your Air conditioning unit.

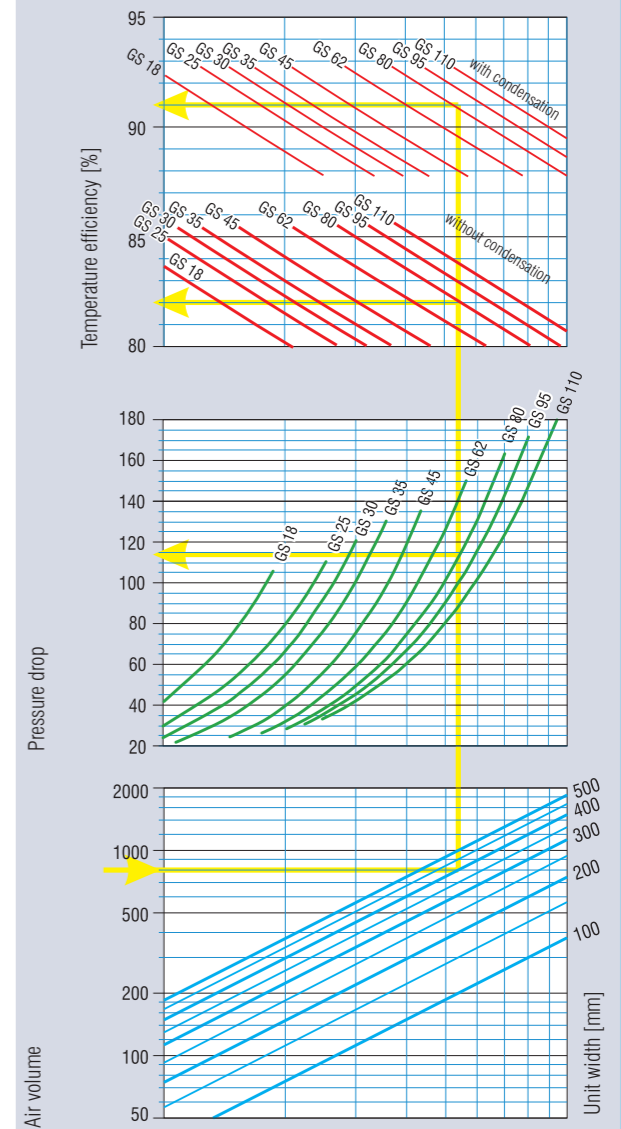
The high efficiencies of the GS exchanger have been confirmed with many tests. Leading air conditioning manufacturers have certified their units using our GS exchanger.

Compatibility

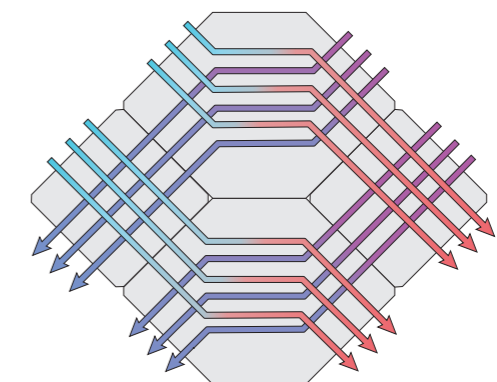
The GS range of exchangers are compatible with the standard crossflow exchangers. These combi-exchangers are used when the application needs higher air volumes.

With this combination, the volume flow rate can be doubled with the same installation depth.

Layout diagram



■ This diagram applies to supply and exhaust air mass flows equal



■ Principle of combi-exchangers

About us

KLINGENBURG

Components for air handling systems - for 3 decades - worldwide:

We are a resourceful company engaged in the production and sales of energy recovery and humidity control products for ventilation systems for more than 30 years.

Our highly innovative products make significant contributions toward saving energy resources and reducing CO₂ emissions.

Klingenburg's high quality and the technological edge of our products are well known throughout the world on the air-conditioning technology market.



Rotary Heat Exchanger

- Execution as aluminum, epoxy, enthalpy or sorption rotor
- High Temperature Rotor made of stainless steel



Counterflow-Plate Heat Exchanger

- Aluminium and epoxy versions available
- Highest efficiency

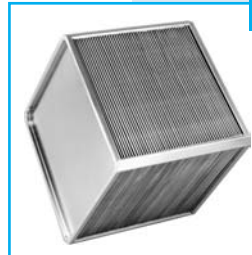


Plate Heat Exchanger

- Aluminium, epoxy and stainless steel versions available



Humidifier

- Hygienic humidification
- Adiabatic cooling

Klingenburg GmbH
Boystrasse 115
D-45968 Gladbeck / Germany

Phone: +49-20 43-96 36-0
Fax: +49-20 43-7 23 62
E-mail: klingenburg@klingenburg.de
www.klingenburg.de